



 **TAURUS™**

RPC

INSTRUCTION MANUAL

GENERAL SAFETY, OPERATING INSTRUCTIONS AND LIMITED WARRANTY

READ CAREFULLY BEFORE USING YOUR FIREARM

Important: Keep this manual with your firearm.

The information contained in this manual is useful, both for beginners and experienced shooters. In addition to important information about the function, cleaning and care of the firearm, this manual contains instructions that will be very helpful in shooting safely.

The most important rule of safe firearm handling is always keep the muzzle pointed in a safe direction!



TaurusUSA.com

f/TaurusUSA

X@taurususa

@TaurusUSA

- Available in 9mm Luger
- Matte Black
- Delayed Blowback
- External Manual Safety
- Accessory Picatinny Rail
- M-LOK Slots
- Ambidextrous
- Threaded Barrel
- QD Mounting Points

CONTENTS




Firearm Safety.....	5
Get To Know Your Firearm	12
Ammunition	16
Operating Instructions.....	20
Disassembly	28
Assembly	33
Care and Maintenance.....	36
Exploded View.....	38
Taurus® Service	40

WARNING

The safety warnings in this booklet are important. By understanding the dangers inherent in the use of any firearm, and by taking the precautions described herein, you can safely enjoy your Taurus® firearm. Failure to follow any of these warnings can result in serious injury to you or others, as well as severe damage to the firearm or other property.

NOTES

SIGNAL WORDS AS DEFINED BY ANSI Z535.6 AND Z535.4 STANDARDS.


 DANGER	DANGER indicates a hazardous situation which, if not avoided, will result in death or serious injury.
 WARNING	WARNING indicates a hazardous situation which, if not avoided, could result in death or serious injury.
 CAUTION	CAUTION indicates a hazardous situation which, if not avoided, could result in minor or moderate injury.
NOTICE	NOTICE is used to address practices not related to physical injury.

FIREARM SAFETY

 DANGER
When a firearm discharges, the bullet or shot can strike a person, resulting in death or serious bodily injury.

The three basic keys to safe handling of firearms:

- 1. KEEP THE MUZZLE POINTED IN A SAFE DIRECTION.** Even if the firearm discharges, if the muzzle is pointed in a safe direction, no one will be injured.
- 2. KEEP YOUR FINGER OFF THE TRIGGER UNTIL YOU ARE READY TO FIRE.** If you maintain good trigger discipline, it is extremely unlikely the firearm will fire.
- 3. NEVER TRUST ANY SAFETY MECHANISM.** If you adopt the attitude that you will not trust any safety mechanism, you will be vigilant about keeping your finger off the trigger and keeping the muzzle pointed in a safe direction.

 WARNING - KNOW YOUR TARGET
Never fire at targets at close range. Ricochets can and do cause death or serious bodily injury. What constitutes "close range" depends on many factors including target material, bullet caliber and angle of impact.

KNOW WHAT IS BEHIND YOUR TARGET. Unless you are shooting into a bullet trap designed to capture the type of ammunition you are firing, projectiles may pass through the target and strike anyone or anything beyond. Bullets can travel miles.

ALWAYS WEAR HEARING PROTECTION. Firearms are loud. The sound they generate is greater indoors. Repeated exposure to loud noises can cause deafness. Hearing protection is rated by decibel reduction. Look for “dB” reduction of 30 or more when purchasing ear protection. Modern ear protection can allow normal hearing until the sound from the discharge reaches the ear. Significant protection can be achieved by layering hearing protection, for example, wearing 30dB rated foam plugs along with 20dB rated ear muffs.

ALWAYS WEAR EYE PROTECTION. In normal operation, firearms emit hot high-velocity gases, particles and metal. These materials flying into your eye can cause blindness. Protect your vision with proper eye protection. Any eye protection may be better than none, but look for ANSI Z87.1-2003 certified eyewear for the best protection.

NEVER HANDLE FIREARMS WHILE UNDER THE INFLUENCE OF DRUGS OR ALCOHOL. Firearms are dangerous. Handling firearms while impaired by drugs or alcohol is foolhardy and can result in serious injury or death. This warning includes prescription drugs that contain a warning about using machinery or driving while taking the medication.

MODIFIED FIREARMS ARE DANGEROUS, AND USE CAN RESULT IN SERIOUS INJURY OR DEATH. “Trigger jobs,” polishing original components or installing aftermarket parts can cause a firearm to function in ways different than intended. Some such work may also be illegal.

DAMAGED FIREARMS ARE DANGEROUS, AND USE CAN RESULT IN SERIOUS INJURY OR DEATH. Repairs should always be made by a qualified gunsmith or by a factory-authorized repair site. Work done by those unfamiliar with the design can cause a firearm to function in ways different than intended.

NEVER ATTEMPT TO DISASSEMBLE OR CLEAN A LOADED FIREARM. DOING SO CAN RESULT IN SERIOUS BODILY INJURY OR DEATH. How often have we heard “But it went off while I was cleaning it!” or, “I did not know it was loaded!” or, “It was jammed, and I tried to take it apart!”?

IF A FIREARM GOES OFF, THERE WAS A ROUND OF AMMUNITION IN THE CHAMBER. Period. “Clear” (or empty) the firearm of all ammunition before disassembling or cleaning.

As owner of your new Taurus® firearm, you are responsible for (1) keeping your finger off the trigger, (2) pointing the muzzle in a safe direction, (3) removing the magazine, (4) pulling the charging handle to the rear and locking it back, and (5) looking and feeling in the magazine well and chamber to confirm the pistol is empty. An empty firearm cannot fire.

FIREARM SAFETY SYSTEMS

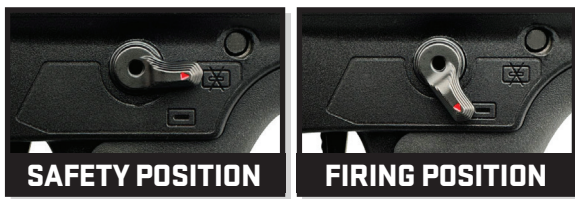
Firearm safety is supported by a system. With your pistol, the system is made up of the following:

1. You! Your involvement in safety cannot be overemphasized. No safety component can keep your finger off the trigger and the muzzle pointed in a safe direction. Also, you are the key to never trusting any of the mechanical parts of the safety system.

2. Indexing Pad. It is important to keep your finger off the trigger until you are ready to press the trigger and fire the pistol. If you keep your finger off the trigger you will not press it by accident and fire the pistol before you are ready to do so, thereby avoiding accidents. The indexing pad/(RMP) gives you a consistent place to put your trigger finger off the trigger, but in a ready position.



3. Manual Safety. Always use the manual safety. The manual safety is designed to prevent the gun from firing by blocking the trigger mechanism. The photographs below illustrate the safety position. When you do engage the safety, it needs to be all the way UP in the SAFE position, not halfway or at some other point in its travel. Do not play with the manual safety and you will avoid accidents.



 **WARNING**

The rules of firearm handling must be followed, even when the manual safety (if equipped) is activated to the safe position.

CARRYING FIREARMS

Carrying a firearm can be dangerous. Carrying a firearm makes it more difficult to control the muzzle and makes it more likely that the firearm can be dropped or bumped causing the firearm to fire.

In almost all circumstances, it is safest to carry a handgun in a holster designed for that specific handgun. Carrying a handgun in a pocket without a specific designed In-Pocket Holster or a trigger shield or in a waist band without a belt clip is always a last choice. Carrying any handgun in a holster that fits the firearm and style of carry should prevent it from accidentally falling and you from losing control of the muzzle.

Except in rare high-threat circumstances, carry your firearm with a full magazine and an empty chamber. If the chamber is empty, the firearm cannot fire.

 **WARNING - CARRYING**

Do not carry your firearm in any way that might let it fall or be bumped. If a firearm falls or is bumped, it may fire.

 **WARNING - CARRYING**

Always review and follow the holster or luggage manufacturer's instructions or the firearm may fall or be bumped and fire.

FIREARM STORAGE AND GUN LOCKS

How you secure your firearm is a personal choice based on the unique circumstances in your home, business or vehicle and the laws of the state where your firearm is located. Any choice you make about securing your firearms will present advantages and disadvantages. You must weigh those advantages and disadvantages and choose which security method is best for you and those around you.



WARNING - LOCKING

Never lock a firearm with a round of ammunition in the chamber. Unlocking a loaded firearm makes it more difficult to maintain trigger discipline and to keep the muzzle pointed in a safe direction.



WARNING

Securing your firearm may inhibit access in a defensive situation and may result in injury or death.

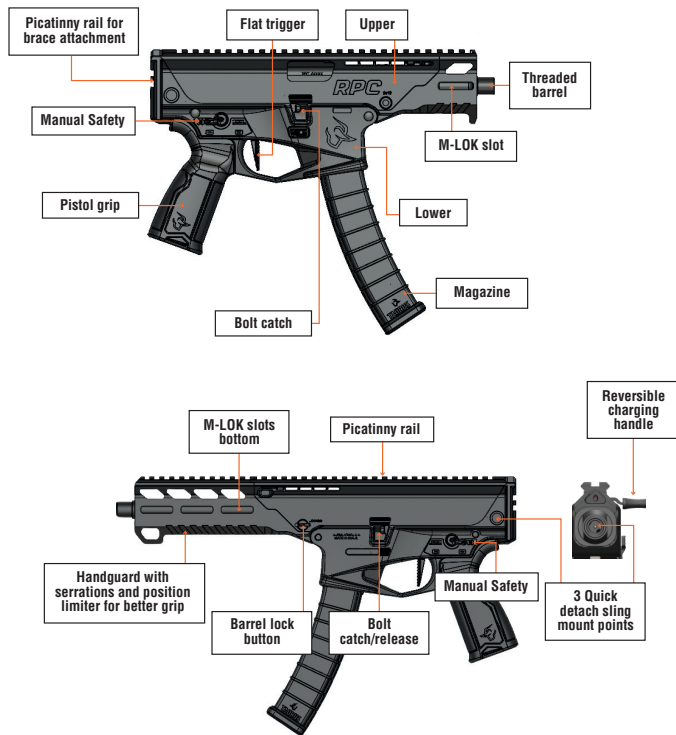


WARNING

Failure to secure a firearm may result in injury or death. Properly securing a firearm means storing your firearm unloaded, decocked and securely locked, with all ammunition in a separate location.

Intentionally left blank

GET TO KNOW YOUR FIREARM



SPECIFICATIONS

Model	RPC	
Caliber	9mm Luger*	
Action	Semi Blowback with delayed opening	
Capacity	32	
Barrel Length	8" (203 mm) 6 grooves, right-hand twist Twist rate: 250 mm	4.5" (115 mm) 6 grooves, right-hand twist Twist rate: 250 mm
Overall Length	16.7"	12.2"
Overall Width	1.74"	
Weight	70.9 oz.	62.9 oz. (no brace)
Sights	Flip-up polymer sights / Flip-up metal sights (optional)	
Materials	Bolt: Carbon Steel / Barrel: Carbon Steel Frame: Stainless Steel / Lower Receiver: Polymer	
Safety Devices	External manual safety	
Finish	Bolt: Gas Nitride / Barrel: Gas Nitride	
Remarks	Picatinny rail, M-LOK slot	

NOTICE

*9mm Luger is a cartridge caliber also commonly known as: 9mm / 9x19 / 9x19mm / 9mm Parabellum / 9mm Para

LOCKING DEVICE INSTALLATION INSTRUCTIONS



WARNING - LOCKING DEVICES

- Always keep your firearm pointed in a safe direction, including when you are installing or removing your locking device.
- Always verify that your firearm is completely unloaded (see page 28) before installing your locking device.
- Do not install locking devices in the trigger guard; always keep your fingers and locking device outside the trigger guard during device installation and removal.
- Store firearms, ammunition and keys separately and securely, away from children and careless adults; do not store your firearm with the keys in the locking device.
- Do not attempt to work the action of your firearm with the locking device in place; this may damage your firearm.
- While locking devices are an important aid to security measures, they are not a substitute for safe firearm handling and proper storage. Remember that any mechanical device can be bypassed with enough time, knowledge, determination and equipment.

LOCKING DEVICES MUST BE USED SAFELY AND RESPONSIBLY

It is important to use the locking device on your Taurus® firearm!

Keep the muzzle pointed in a safe direction and your fingers outside the trigger guard at all times during installation of the locking device!

To Install the Factory-Supplied Locking Device:

1. Remove the magazine from your firearm.
2. Open the action completely, and verify that the firearm is completely unloaded and contains no cartridges or cartridge cases! Use the bolt catch to keep the action open during installation of the locking device.
3. Insert the cable directly in your pistol as shown in Figure 1.
4. To lock: With the key turned to the farthest clockwise position, insert the loose end of the cable into the lock. Turn the key counterclockwise and remove the key.
5. Once the lock is securely closed, pull firmly on the lock to test the connection and be sure it is locked. Do not leave or store your firearm with the key in the lock! Store your locked, unloaded firearm and the key in secure, separate locations, away from ammunition, children, and unauthorized adults.



WARNING

Never leave your keys in the lock when the lock is installed on the firearm.

AMMUNITION

WARNING

Using the wrong ammunition in your firearm can result in serious bodily injury and damage to your firearm. Make certain the ammunition you load in the magazine is the same caliber as is marked on the firearm.

WARNING - AMMUNITION AND INDUSTRY STANDARDS

Use only clean, dry factory-loaded ammunition. Old, damaged, wet or oily ammunition may fire at pressures higher than industry standard, causing injury to you and bystanders or damage to your firearm.

Do not use reloaded ammunition in your firearm. Its firing pressures are unknown and may well exceed industry standard, causing injury to you and bystanders or damage to your firearm.

Odd sounds are signs of trouble. If a round “does not sound right” when it goes off, stop firing right away. A bullet may be stuck in the barrel. Firing the firearm in this condition may cause pressures higher than industry standard, causing injury to you and bystanders or damage to your firearm.

If you hear any odd sounds when firing your firearm, stop firing, clear the firearm and “field strip” (or disassemble) the firearm in accordance with the procedures listed in this manual. Once the barrel is removed from the slide, look down the bore. If you do not see light, there is something stuck in the bore. Do not fire the firearm again, and take the firearm to a qualified gunsmith or contact the Taurus® Service department at 800-327-3776.

WARNING - LEAD EXPOSURE

This product can expose you to lead, which is known to the state of California to cause cancer and birth defects or other reproductive harm. For more information go to www.P65warnings.ca.gov.

SHOOTING OR CLEANING GUNS MAY EXPOSE YOU TO LEAD

WARNING

“+P” ammunition can be dangerous. There is a detailed discussion about “+P” and “+P+” ammunition on page 18 of this manual. Until you have read that information, do not fire any ammunition marked “+P” in your firearm.

WARNING

Never fire ammunition marked “+P+” in your firearm. +P+ may not comply with industry standards as to chamber pressures.

WARNING

It is DANGEROUS to fire “+P+” ammunition in any Taurus® firearm, and doing so may result in serious bodily injury or death. The Sporting Arms and Ammunition Manufacturers Institute (SAAMI) does not recognize any “+P+” ammunition at all. These loads operate at unknown pressures.

There are only four calibers that can carry a “+P” rating from SAAMI. They are 38 Special +P, 9mm Luger +P, 38 Super Automatic and 45 Automatic +P. There are no other SAAMI approved “+P” loads. Any ammunition in any other caliber marked “+P” is not SAAMI compliant, may be dangerous and should not be used.

Only fire SAAMI rated Plus P (“+P”) ammunition in Taurus® models designated by Taurus for +P use as below. **Firing +P ammunition in other Taurus products may be dangerous and can result in serious bodily injury or death.**

Model 856 small-frame revolver in 38 Special.

Model 850 small-frame revolver in 38 Special.

Model 851 small-frame revolver in 38 Special.

Model 85 Polymer small-frame revolver in 38 Special.

Model 82 medium-frame revolver in 38 Special.

Model 817 compact frame (tracker) revolver in 38 Special.

All firearms chambered in 38 Super Automatic.

All firearms chambered in 45 Automatic (ACP).

All firearms chambered in 9mm Luger.

NOTICE

Even if your Taurus® firearm is rated for Plus-P (“+P”) ammunition, such ammunition generates pressures significantly in excess of the pressures associated with standard ammunition. Such pressures may affect the useful life of the firearm or exceed the margin of safety built into many firearms. Unless you need +P ammunition, do not use it, particularly for practice.

FIREARMS ARE NOT ALL ALIKE

Many makes and models of firearms might LOOK nearly the same. However, they differ widely in design, operation, and in the location and function of various controls. You may access the Taurus® website at TaurusUSA.com to view and print manuals.

“JAMS”

SOMETIMES A CARTRIDGE OR SHELL CASE MAY BECOME “JAMMED” OR STUCK IN THE FIREARM. TO CLEAR THE JAM, (1) POINT THE MUZZLE IN A SAFE DIRECTION, (2) KEEP YOUR FINGER OFF THE TRIGGER AND ON THE INDEXING PAD/(RMP), (3) REMOVE THE MAGAZINE, THEN (4) PULL BACK THE CHARGING HANDLE AND LOCK IT TO THE REAR. THE JAMMED CARTRIDGE OR CASE CAN NOW BE REMOVED BY SHAKING OR PICKING IT OUT.



WARNING - FIRING

The bolt opens and shuts quickly while firing. Hot brass is ejected quickly and can burn you. Always wear shooting glasses, hat with brim, and hearing protection.



WARNING - ANY GUN MAY FIRE IF DROPPED

If dropped or struck, the firearm may fire.



WARNING

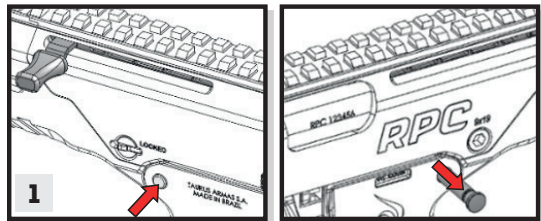
If dropped or struck the firearm should be inspected by a trained armorer/gunsmith for a complete function check. After the firearm was dropped or struck, mechanisms, including automatic safeties, may not function as intended resulting in accidental death or serious injury.

OPERATING INSTRUCTIONS

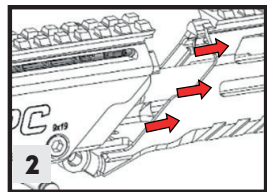
WARNING

Before disassembly, (1) point the muzzle in a safe direction, (2) keep your finger off the trigger and on the indexing pad/(RMP), (3) remove the magazine, then (4) pull back the charging handle and lock it to the rear, (5) look and feel the magazine well and chamber to confirm the pistol is empty. Never attempt to disassemble or clean a loaded firearm.

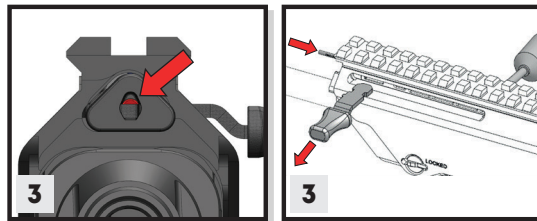
To **reverse** the side of the **charging handle**, follow these steps:



1. Using your thumb, push the **front takedown pin** from the left side of the pistol until you hear a click. A pin punch can be used to assist in this operation. Then, pull the **pin** from the right side until it reaches its full travel. The **handguard** can now be separated from the **receiver group**.



2. Firmly pull the **handguard** forward to remove it from its housing in the **receiver**.



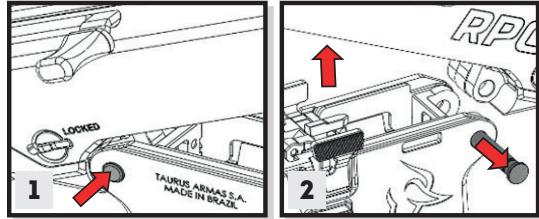
3. While holding the charging handle in its foremost position, using a 1/16" pin punch, insert it in the small hole in the front. As shown in (Figure 3), push the 1/16" pin punch on the retaining pin to release the **charging handle**. Pull the **charging handle** out of its housing.

4. To reassemble the **charging handle**, simply push it back in until it reaches the end of its housing. If done correctly, you will hear a click (the **retaining pin** will automatically engage to lock the **charging handle** in place). Ensure the **handle** is fully seated by trying to pull it out of its housing.

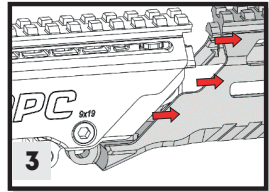
DISASSEMBLY OF THE BARREL SUB-ASSEMBLY

To disassemble the barrel sub-assembly of the RPC, follow the steps below.

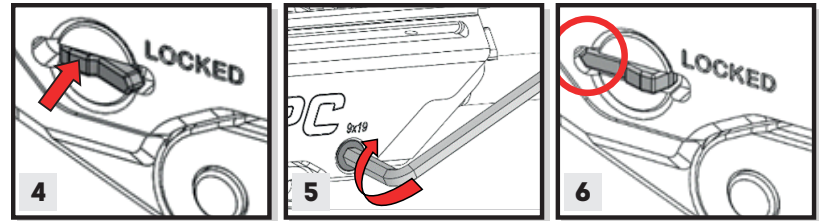
Repeat the disassembly steps, as previously described on page 20. Once in that condition, proceed with the detailed steps below.



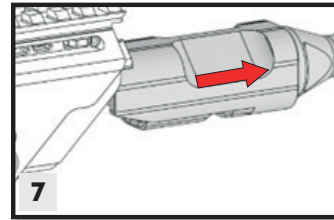
1. Using your thumb, press the **rear takedown pin** until you hear a click. A pin punch may be used to assist in this operation. Then, pull the **pin** from the opposite side until it reaches its full travel. The **Upper** can now be separated from the **Lower Receiver**.



2. Firmly pull the **handguard** forward to remove it from its housing in the **receiver**.



3. Press the **barrel lock button** in the front area until the tip lifts above the housing. While holding the **lock button** down (Figure 4), insert a 5mm hex key, turn it **180 degrees clockwise** until the button points to the "unlocked" position (Figure 6), and rests in the opposite slot (unlocked).



4. While firmly holding the **receiver**, pull the **Barrel Sub-Assembly** strongly out of its housing until it is completely free.

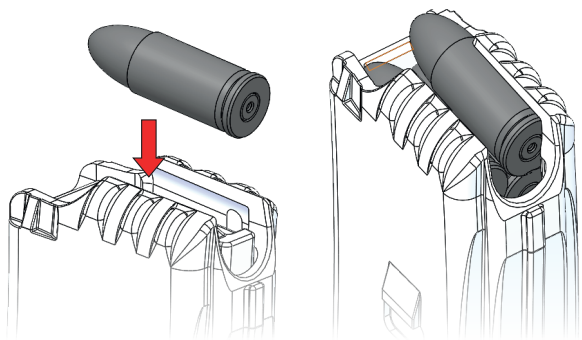
The reassembly of the **RPC Barrel Sub-Assembly** must be performed in the reverse order of disassembly, as shown above.

Before reassembling it, thoroughly clean the barrel and upper receiver from any debris and apply a light amount of oil around the barrel.

Verify that the barrel is seated all the way back, so that the barrel lock button can rotate freely under the barrel and lock it.

LOADING THE MAGAZINE

1. Hold the **magazine** with one hand and, with the other, insert the **cartridges** by pressing each round downward until the **magazine's** maximum capacity is reached.
2. Verify the **follower** maintains correct round orientation.



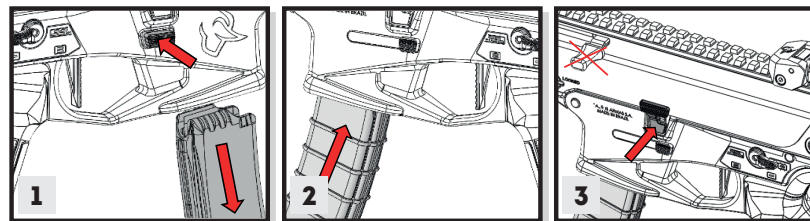
NOTICE

Fully loaded magazines may offer increased resistance when seating the magazine, especially if the bolt carrier assembly is in the forward position, as compared to when the bolt is open. This occurs because the cartridge may contact the face of the bolt and must be pressed down while the magazine is being inserted until it clicks into the magazine catch.

LOADING THE FIREARM

Condition: empty chamber, bolt open, unloaded magazine:

1. Keep your finger off the **trigger** and point the firearm in a safe direction. Engage the manual safety.
2. Remove the empty **magazine** by holding the **release button** until the **magazine** is free from the **magazine well**.
3. Insert a loaded **magazine** into the **magazine well** and ensure it is properly seated. Press until it clicks into place (pull down slightly to confirm).
4. With your free hand, pull the **charging handle** rearward to the end of its travel and release it. **DO NOT** ride the **charging handle** forward. Always allow it to go forward under spring pressure, or the firearm may fail to load correctly (i.e., the **bolt carrier group** may not fully return). Ensure the **bolt** is completely closed.



LOADING THE FIREARM

Condition: firearm with a round in the chamber, bolt closed, magazine inserted with few or no rounds:

1. Keep your finger off the **trigger** and point the firearm in a safe direction. Engage the manual safety.
2. Remove the **magazine** by pressing and holding the **magazine release button** until the magazine is free from the magazine well.
3. Insert a loaded **magazine** into the **magazine well** and ensure it is properly seated. Press until it clicks into place (pull down slightly to confirm).

NOTICE

Fully loaded magazines may offer greater resistance when engaging the magazine catch under this bolt-closed condition. This occurs if a round touches the bolt face and must be pressed downward as the magazine is inserted, until it clicks into place.

Intentionally left blank

FIRST-STEP DISASSEMBLY

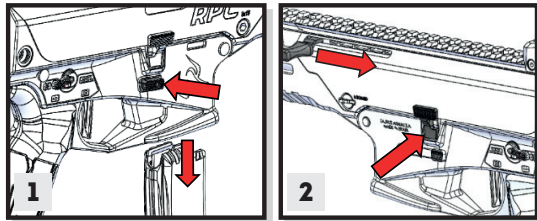
WARNING

Always wear eye protection that is specified for use with firearms (ANSI Z87.1+) every time you handle your firearm for cleaning and maintenance.

For the maintenance of your Taurus firearm, it is necessary to perform a first-level disassembly. **ENSURE THAT THE FIREARM IS UNLOADED.**

To unload your firearm, follow these steps:

1. Point your firearm in a safe direction and engage the manual safety.
2. Keep your finger off the **trigger**.
3. Press the **magazine release button**.
4. Remove the **magazine**.



5. Pull the **charging handle**, performing at least two safety strokes, and engage the **bolt catch** so that it remains in the open position.

6. With the bolt open, visually and physically ensure the **chamber** and **magazine well** are empty.

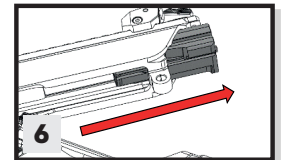
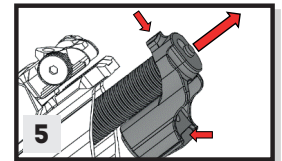
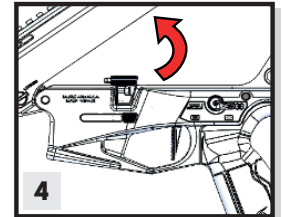
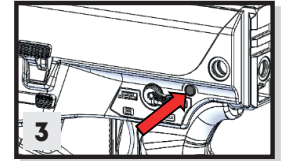
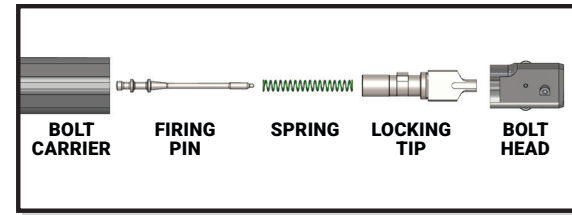
After inspection, close the **bolt** by either engaging the **bolt catch** or by fully pulling the **charging handle** to the rear and releasing it.

7. Using your thumb, push the **rear takedown pin** until you hear a click. A **pin punch** may be used to assist with this operation. Then, pull the **pin** from the other side until it reaches its full travel.

8. Rotate the **upper receiver** as shown in Figure 4 to access the **mechanism housing, bolt assembly, and bolt carrier**.

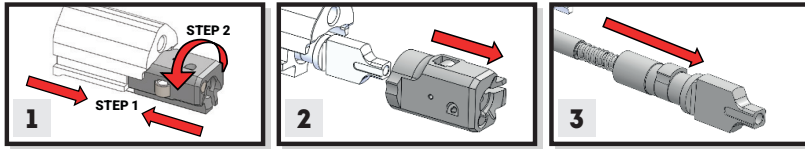
9. Gently press the lower part of the support so that it is released from the **receiver latch**, while simultaneously pulling it out of the weapon.

10. Tilt the weapon horizontally to access the **lower receiver**. Push the **bolt carrier assembly** out of the receiver.



DISASSEMBLY OF THE BOLT CARRIER ASSEMBLY

1. With the **bolt assembly** removed from the **upper receiver**, push the bolt head against the **bolt carrier**, rotate the head 90 degrees counterclockwise to release it from the **bolt carrier**. Then pull the **bolt head** forward to detach it from the **assembly**.
2. Remove the **locking tip** together with the **firing pin** and spring.
3. Remove the **firing pin** and spring from inside the **locking tip**.

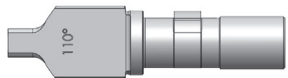


NOTICE

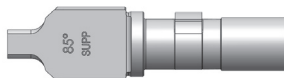
The RPC is configured from the factory with a 110-degree locking tip installed for unsuppressed use.

When operating the firearm with a suppressor, follow the instructions above under **Disassembly of the Bolt Carrier** and the instructions on page 33 under **Assembly** to replace the locking tip with the 85-degree locking tip which comes included with the firearm.

Use of the correct locking tip is critical to ensure proper function and safe operation of the firearm. Taurus has specifically engineered each locking tip for its intended use.



110 DEGREE - STANDARD AMMO



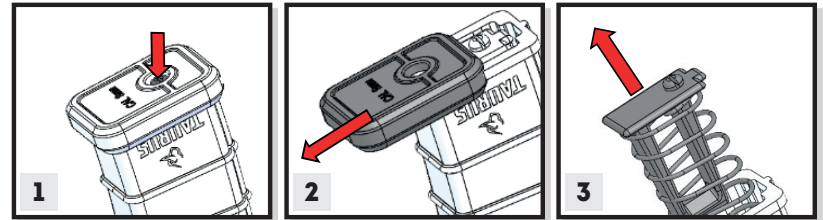
85 DEGREE - SUBSSONIC AMMO/SUPPRESSED

DISASSEMBLY OF THE MAGAZINE

1. Press the **magazine base plate lock**. While keeping it pressed, slide the **base plate** in the direction shown until it is completely removed.
2. Remove the **magazine spring, follower, and spring base**.

WARNING

When removing the base plate, be careful with the internal parts that are under **spring tension**, as they may **eject suddenly and forcefully** from the magazine.



WARNING

Disassembly of the firearm beyond these steps is not recommended unless performed by a qualified gunsmith.



ASSEMBLY

The RPC should be reassembled in the reverse order of disassembly, as follows:

1. Insert the **spring** into the **firing pin body**, and both must then be inserted into the **locking tip housing**.
2. Insert the **locking tip** (with the firing pin and spring already assembled) into the **bolt carrier**, aligning with the shape of the **housing slot**.
3. Fit the **bolt head** onto the **locking tip**, pushing it to the maximum travel, then rotate it 90 degrees clockwise until the **bolt carrier assembly** is fully joined.
4. Insert the **bolt carrier assembly** into the **receiver housing** and push it fully into position.
5. Insert the **recoil spring assembly** into the hole in the **bolt carrier** and push it until the **recoil spring support** (at the rear) locks into place in the **receiver**.
6. With the **receiver** assembled, rotate it to fit into the **lower assembly housing**. Then push the **takedown pin** until it locks, joining the **upper** and **lower assemblies**.
7. Cycle the **bolt carrier assembly** (2 to 3 times) to verify that the **assembly** is correctly installed.

PREVENTIVE MAINTENANCE

INTRODUCTION

Your firearm, like any other machine, requires proper maintenance to ensure its operation and preserve its lifespan. This manual will explain how to disassemble, clean, lubricate, and perform maintenance on your firearm.

MAINTENANCE FREQUENCY

Your firearm should be cleaned and lubricated to prevent corrosion and remove unwanted dirt or grime that may hinder its operation.

Maintenance should be performed following the frequency below.

1. When new, before using it for the first time.
2. After each use.

The need for maintenance is associated with the exposure of the firearm to weather conditions, including but not limited to rain, snow, saltwater, dust and sand.

All firearms should be inspected and maintained after a drop or if there is any suspicion of malfunction.

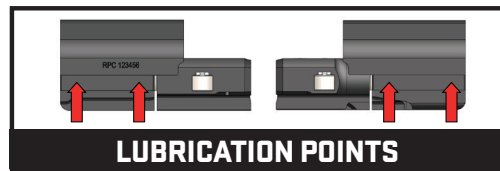
CLEANING YOUR FIREARM

BARREL

Once the firearm is disassembled (See page 32), the barrel and chamber can be easily cleaned using an appropriate brush. Firearm-specific solvents can be used for cleaning. The inside of the barrel and chamber should be dried after cleaning.

BOLT

The bolt should be cleaned to remove any foreign debris. Use an appropriate brush for cleaning the bolt. The bolt face and the area below the extractor claw should be meticulously cleaned with a brush until completely free of debris. Add a small drop of good quality gun oil on each side surface of the bolt and rails.



FRAME

The frame should be cleaned externally with a soft cloth. Internal parts should be cleaned using a soft brush. Firearm-specific solvents can be used. Solvents should be completely removed, and the frame should be dry and clean.

MAGAZINE

When necessary, the magazine can be cleaned with a soft brush. The spring and carrier can be wiped clean with a clean cloth. If solvents are used, they should be completely removed from the parts before assembly to prevent contamination of the ammunition.

NOTICE

Do not use solvents on polymer magazines.

CARE AND MAINTENANCE

The firearm may be cleaned and lubricated under normal conditions with the disassembly steps described in pages 30-33. We recommend you clean and lubricate your firearm at least every 200 rounds for optimal performance. At the same time, check for any loose screws or pins. Tighten the screws and press pins back in as needed.

To keep a firearm safe and in good working condition, it must be kept clean and covered with a light film of good quality gun oil to prevent corrosion. The barrel bore should be cleaned and left free of debris. Follow these steps:

- Remove excessive firing residue from the bore and chamber using a properly fitted brass brush dipped in a gun cleaning solvent. Finish the bore cleaning process by running a dry cotton cloth patch through the bore to remove remaining residue and solvent.
- Clean the exterior of the firearm, slide and rails using a non abrasive cleaning cloth. Remove dust and residue from small crevices using a small brush.
- Lubricate the frame rails and barrel lockup points.
- After cleaning, rub the firearm with a lightly oiled cloth.

Please note that a firearm with laser should not be cleaned in a well or supersonic machine that submerges the firearm, as this process can damage the laser system.



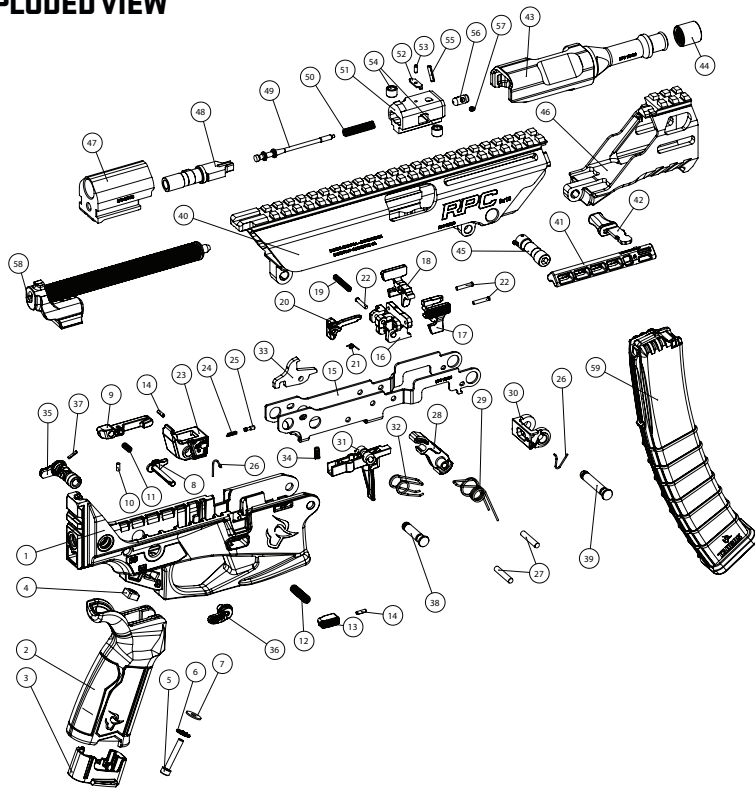
WARNING

Before cleaning, (1) point the muzzle in a safe direction, (2) keep your finger off the trigger and on the indexing pad/(RMP), (3) remove the magazine, then (4) pull back the charging handle and lock it to the rear, (5) look and feel the magazine well and chamber to confirm the firearm is empty. Never attempt to clean a loaded firearm.

MALFUNCTIONS, CAUSES AND SOLUTIONS

Malfunction	Cause	Solution
Feeding failure in the chamber	Dirty weapon and/or dirty chamber	Clean and lubricate the weapon according to the manual instructions
	Damaged or out-of-spec ammunition	Remove the ammunition
Misfire (Failure to fire)	Dirty weapon	Clean and lubricate the weapon according to the manual instructions
	Defective cartridge	Discard defective ammunition
	Firing pin tip damaged or broken	Check if the firing pin is intact. Replace the component if necessary
Failure to extract	Jammed extractor	Clean the extractor to remove excess residue
	Damaged or broken extractor claw or extractor spring	Replace the damaged or broken component
Failure to eject	Obstruction in the Bolt Carrier Assembly (BCA) movement	Clean and lubricate the weapon
	Broken extractor	Replace the component

EXPLODED VIEW



PART LIST

- | | | | |
|----|--|----|---|
| 1 | POLYMER LOWER SEMI AUTO | 35 | SAFETY SELECTOR SEMI AUTO |
| 2 | PISTOL GRIP | 36 | AMBIDEXTROUS RIGHT HAND LEVER |
| 3 | PISTOL GRIP BOTTON PLATE | 37 | SPRING PIN 1,5X8 MCK ISO8748 STAINLESS STEEL |
| 4 | SQUARE NUT M4X0,7 | 38 | REAR TAKE DOWN PIN |
| 5 | SCREW ALLEN HEAD M4 X 25 DIN 912 | 39 | FRONT TAKE DOWN PIN |
| 6 | SERRATED LOCK WASHER M4 - DIN6798 | 40 | UPPER RECEIVER SEMI AUTO - USA |
| 7 | FLAT WASHER 5/32" X 7/16" ZINC PLATED | 41 | CHARGING HANDLE SUPPORT ASSY |
| 8 | MAGAZINE RELEASE CATCH CONECTOR | 42 | REVERSIBLE CHARGING HANDLE |
| 9 | MAGAZINE RELEASE LATCH | 43 | BARREL SUB ASSEMBLY 9MM 4.5" |
| 10 | MAGAZINE RELEASE CONECTOR PIN | 44 | BARREL THREAD PROTECTOR |
| 11 | MAGAZINE RELEASE CONECTOR SPRING | 45 | BARREL LOCKING PIN ASSY |
| 12 | MAGAZINE RELEASE MAIN SPRING | 46 | HANDGUARD 4.5" |
| 13 | MAGAZINE RELEASE BUTTON | 47 | BOLT CARRIER SEMI AUTO |
| 14 | SPRING PIN 2X8 HCK ISO8748 STAINLESS STEEL | 48 | ROLLERS LOCKING TIP |
| 15 | TRIGGER GROUP HOUSING SEMI AUTO | 49 | FIRING PIN |
| 16 | CENTRAL SUPPORT | 50 | FIRING PIN SPRING |
| 17 | SLIDE STOP LEVER - RIGHT SIDE | 51 | BOLT HEAD |
| 18 | SLIDE STOP LEVER - LEFT SIDE | 52 | ROLLER PILOT CLAMP |
| 19 | BOLT CATCH SPRING | 53 | SPRING PIN 2X6 MCK ISO8748 STAINLESS STEEL |
| 20 | EJECTOR | 54 | LOCKING ROLLER |
| 21 | EJECTOR SPRING | 55 | SPRING PIN 2,5X12 HCK ISO8748 STAINLESS STEEL |
| 22 | BOLT CATCH PIN | 56 | EXTRACTOR |
| 23 | REAR SUPPORT | 57 | EXTRACTOR SPRING |
| 24 | FIRING SELECTOR PLUNGER SPRING | 58 | RECOIL SPRING ASSEMBLY |
| 25 | SELECTOR INDEX PLUNGER | 59 | POLYMER MAGAZINE 9MM 32 RDS |
| 26 | TAKEDOWN PIN SPRING | | |
| 27 | MECHANISM PIN | | |
| 28 | HAMMER | | |
| 29 | HAMMER SPRING | | |
| 30 | FRONT SUPPORT | | |
| 31 | TRIGGER SEMI AUTO | | |
| 32 | TRIGGER SPRING SEMI AUTO | | |
| 33 | DISCONNECTOR SEMI AUTO | | |
| 34 | DISCONNECTOR SPRING | | |

TAURUS SERVICE

Should your firearm require adjustment or repair, contact our Customer Care department at 800-327-3776.

Please follow these suggestions to expedite service in the United States to return any firearm to us for adjustment or repair.

1. Federal law permits you to return your firearm to the manufacturer for service via common carriers. However, state and local firearms laws vary greatly; you should consult your local prosecuting attorney regarding any restrictive laws in your jurisdiction regarding your shipment or receipt of firearms. With the above in mind, it is strongly recommended that any firearm sent to us for repair be sent through a federally licensed dealer.

2. All firearms must be shipped to us prepaid. WE WILL NOT ACCEPT COLLECT SHIPMENTS.

3. Warranty Service: If your product is covered under the Taurus® Limited Lifetime Warranty (<https://warranty.taurususa.com>) or was manufactured prior to January 1, 2017, you must contact Taurus to receive warranty service. You may contact Taurus by calling 800-327-3776, logging onto <https://taurususa.com>, or in writing: Taurus, Attn: Warranty Service, 100 Taurus Way, Bainbridge, GA 39817. Please include a description of the claimed issue, along with your name, address, telephone number, model and serial number of your firearm, proof of purchase, and date of purchase.

4. FIREARMS MUST BE SHIPPED UNLOADED. Double check the chamber of your firearm before shipping. If firearms are sent to Taurus in a loaded condition, we are required by law to notify the Federal authorities.

5. DO NOT include telescopic sights, custom grips, holsters, or other accessories with any firearm shipped to us.

PARTS

Firearms require periodic maintenance, inspection, adjustment and repair. If your firearm has a malfunction, be safe. Stop firing, “clear” and unload the firearm and take it to a qualified gunsmith. Before shooting it again, contact our Customer Care department if you have any questions.

If water, sand, or other foreign matter gets in your firearm, disassemble (see pages 30-33) and thoroughly clean it. Failure to keep your firearm clean and in proper working order can be dangerous.

Our Customer Care department maintains a full stock of replacement parts for current Taurus firearms. Even though most gunsmiths have the knowledge, training and ability to make the necessary repairs to your firearm, the skill and workmanship of any particular gunsmith is totally beyond our control. Should your firearm require service, return it to our Customer Care department.

Remember, unauthorized adjustments or parts replacement can void your warranty. If you choose to have someone else do the required work, the purchaser and/or installer of parts must accept full responsibility for the correct adjustment and function of the firearm.



TAURUS® LIMITED LIFETIME WARRANTY

Taurus International Manufacturing, Inc. hereby provides the following **LIMITED LIFETIME WARRANTY** to the original purchaser of the enclosed Taurus firearm subject to the terms and conditions set forth below. **THIS IS THE ONLY WARRANTY EXTENDED BY TAURUS COVERING THIS FIREARM.**

What does the warranty cover and what is its duration?

Taurus International Manufacturing, Inc. warrants to the original purchaser that the enclosed firearm was made free of defects in material, function, and workmanship. Taurus promises to remedy any defect in material, function or workmanship for the entire time that the original purchaser owns the firearm. This warranty covers the firearm's finish, grips, magazines, sights or accessories for the first year. Any claims of defect related to lasers must be directed to the manufacturer of the laser. This warranty terminates automatically upon the transfer of this firearm to any individual or entity other than the original purchaser.

Disclaimer and Limitation of Remedy.

ANY IMPLIED WARRANTIES OF MERCHANTABILITY IMPARTED BY STATE LAW WILL BE LIMITED TO ONE (1) YEAR.

Some States do not allow limitations on how long an implied warranty lasts, so the above-limitation may not apply to you.

ANY AND ALL INCIDENTAL AND CONSEQUENTIAL DAMAGES ARE EXPRESSLY DISCLAIMED UNDER ALL CIRCUMSTANCES.

Some States do not allow the exclusion or limitation of incidental or consequential damages, so the above limitation or exclusion may not apply to you. This **LIMITED LIFETIME WARRANTY** gives you specific legal rights, and you may also have other rights which vary from State to State.

Taurus International Manufacturing, Inc. will not be responsible for:

1. Defects or malfunctions resulting from careless handling, unauthorized adjustments or modifications.
2. Use of defective or improper ammunition, reloaded ammunition, corrosion, neglect, abuse, ordinary wear and tear or unreasonable use.
3. Criminal misuse, negligence or use under the influence of drugs or alcohol.

How do you obtain warranty service?

The warranty becomes effective only if activated by the original purchaser within thirty (30) days of the purchase date by registering online at: <https://warranty.taurususa.com> or by calling Taurus at 800-327-3776.

You must contact Taurus International Manufacturing, Inc. to receive warranty service. You may contact Taurus by calling 800-327-3776, logging onto <https://taurususa.com>, or in writing: Taurus, Attn: Warranty Service, 100 Taurus Way, Bainbridge, GA 39817. Please include a description of the claimed issue, along with your name, address, telephone number, model and serial number of your firearm, proof of purchase, and date of purchase.

IMPORTANT DO NOT DISCARD

**KEEP THIS MANUAL WITH THE FIREARM
UPON CHANGE OF OWNERSHIP.**

TAURUS ARMAS S.A.

Av. São Borja, 2181 – Prédio A
São Leopoldo/Fazenda São Borja
Rio Grande do Sul
93.035-411
Brasil

TAURUS INTERNATIONAL MANUFACTURING, INC.

100 Taurus Way
Bainbridge, GA 39817
Telephone: 1-800-327-3776



TAURUSUSA.COM

045-0059-00